



MAINTENANCE AND CARE INSTRUCTIONS

Olympia products are designed and engineered under strict quality standards. Regular and proper care of our products will ensure years of trouble free service. To clean, simply wipe with a damp, soft cloth. Do not use abrasive or harsh cleaners as they may result in finish damage. Regularly remove and clean minor debris from the aerator.

TROUBLESHOOTING

A. If water leaks from the tub spout/ showerhead:	1. Shut off both hot and cold water supplies.
	2. Use screwdriver counterclockwise to remove handles (A,B,C).
	3. Remove valve flanges and sleeves (D,E).
	4. Remove stem assembly (F) and check for damage. If damage is found, replace.
	5. Replace stem assembly (F), trim flanges (D,E) and handles (A,B,C).

OLYMPIA FAUCETS, INC. LIMITED LIFETIME WARRANTY *

Olympia Faucets, Inc. warrants its products to the original consumer purchaser to be free from defects in material and workmanship as long as the consumer purchaser owns it. Dated proof of purchase must accompany all warranty claims. PVD finishes carry a lifetime warranty in residential service.

Olympia Faucets, Inc. will replace, free of charge, to the original consumer purchaser, any and all parts that prove defective under normal installation, use, and service. Damage as a result of misuse, abuse, accident, or improper installation, will consequentially void this warranty. Replacement parts can be obtained from your local dealer or directly from Olympia Faucets. Olympia Faucets, Inc. recommends using a certified plumber for all faucet installation and repair.

This warranty is limited to replacement of defective parts only. Incidental and consequential damages, labor charges, repair, or replacement costs are expressly excluded. Some states do not allow the exclusion or limitation of incidental or consequential damages, so the above limitation may not apply to you. This warranty gives you specific legal rights, as you may have other rights of which vary from state to state.

Installation or maintenance and cleaning must be in compliance with instructions furnished with every Olympia product. If you find a problem with your product, please immediately contact your nearest Olympia Faucets, Inc. dealer or sales representative.

* 2 year limited warranty on commercial and multi-family projects.



INSTALLATION AND MAINTENANCE INSTRUCTIONS FOR OLYMPIA TWO & THREE HANDLE TUB AND SHOWER SETS

Caution: This product may not meet the current building code. This product is not pressure balanced. Pressure balanced products are available from Olympia. Please consult your nearest Olympia dealer.

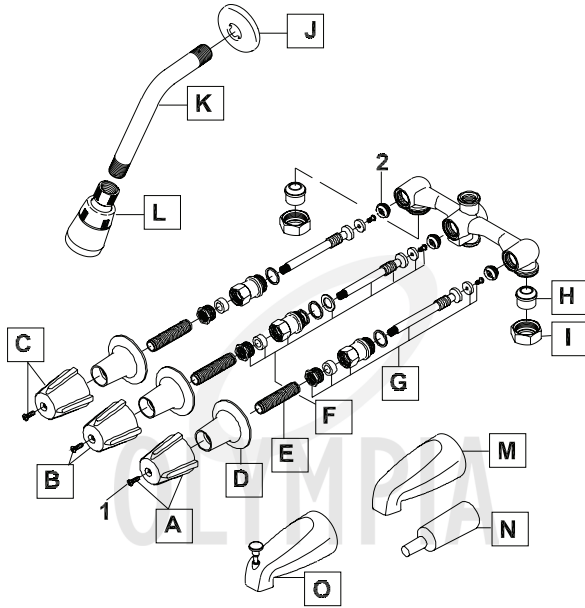
PRODUCT NUMBERS

- #P-3210** Three Handle Tub and shower set-Metal Handles
- #P-3220** Three Handle Tub and Shower set-Acrylic Handles
- #P-1210** Two Handle Tub and Shower Set-Metal Handles
- #P-1220** Two Handle Tub and Shower Set-Acrylic Handles
- #P-1211** Two Handle Tub Set-Metal Handles
- #P-1221** Two Handle Tub Set-Acrylic Handles
- #P-1212** Two Handle Shower Set-Metal Handles
- #P-1222** Two Handle Shower Set-Acrylic Handles





Thank you for purchasing this quality product. Olympia products are rigorously tested to provide long service under normal conditions. Prior to installation, familiarize yourself with this parts diagram. Make sure that you have all of the illustrated parts for your Olympia product before installation.



ITEM #	DESCRIPTION
1	OP-490037 Screw
2	OP-440014 Seat

ITEM #	DESCRIPTION
A	OP-190013C Metal Handle-Cold OP-190009C Acrylic Handle-Cold
B	OP-140004V Metal Handle-Diverter OP-140005V Acrylic Handle-Diverter
C	OP-190013H Metal Handle-Hot OP-190009H Acrylic Handle-Hot
D	OP-440012 Flange
E	OP-440013 Plastic Escutcheon Nipple
F	OP-340002 Stem Unit-Diverter
G	OP-340001 Stem Unit-Cold,Hot
H	OP-440015 Union
I	OP-440016 Nut
J	OP-640001 Shower Flange
K	OP-640002 Shower Arm
L	OP-640031 1.75 GPM Shower Head
M	OP-640014 Tub Spout
N	OP-440017 Guard Cover
O	OP-640015 1/2" IPS Diverter Tub Spout (For P-1210 & P-1220)



For more care information or trouble shooting inquiries about your Olympia product, please call:
OLYMPIA FAUCETS, INC. (888) 772-7701
 Central Standard Time: 8:00am ~ 7:00pm
www.olympiafaucets.com

INSTALLATION INSTRUCTIONS

Tools you will need:

- Plumbers Putty
- Teflon Tape
- Screwdriver
- Flexible Supply Lines
- Pipe Wrench
- Adjustable Wrench
- Basin Wrench
- Soft Cloth

Tub And Shower INSTALLATION:

1. Carefully shut off both hot and cold water supplies. Cover the drain with a soft cloth to prevent the loss of any parts. If this installation is for a replacement, carefully remove the existing valve and clean the entire mounting surface.
- 2a. For 1/2" threaded pipe connection: connect water supplies to left (hot) and right (cold) valve body inlets with Teflon Tape.
- 2b. For 1/2" sweat copper tubing connections: remove rubber and plastic parts to prevent damage. Solder water supplies to left (hot) and right (cold) valve body inlets.
3. Insert shower flange (J) onto the shower arm (K). Install shower arm (K). Then Install Showerhead (L). Apply Teflon Tape at threaded Connections.
4. Install tub spout (M). Place handles (A,B,C) on valve stems (F,G) and turn on hot and cold water to full open for one minute to flush thoroughly. Check for leaks.
5. Shut off water. Remove handles (A,B,C). Install trim flanges (D). Re-install handles (A,B,C).