

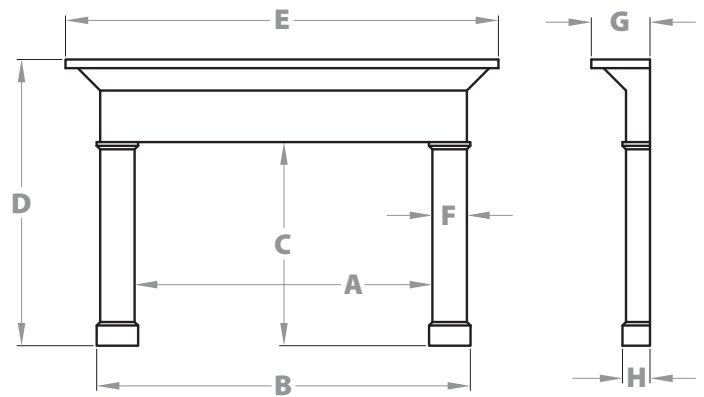
Abington



AMERICAST ARCHITECTURAL STONE thin cast stone mantel surrounds create a luxurious focal point for any fireplace at a fraction of the cost of real stone. Our surrounds, hand-made in America, provide the rugged appearance of authentic stone along with highly detailed architectural design. Constructed from a combination of gypsum and fiber materials, our surrounds are non-combustible and do not shrink or swell with temperature or humidity changes ensuring a tight fit upon installation. All surrounds include mantel shelf, legs, surround panels and hearth. Models with adjustable face panels fit a variety of fireplace openings. Models are available in variety of finishes such as travertine. Colors other than shown are available upon request.

Americast Architectural Stone mantel surrounds highlight the rugged warmth of your fireplace.

- A OPENING WIDTH: 52"
- B OUTSIDE WIDTH: 71-1/2"
- C LEG HEIGHT: 40"
- D OUTSIDE HEIGHT: 58"
- E TOP WIDTH: 80"
- F LEG WIDTH: 10-1/4"
- G SHELF DEPTH: 10"
- H LEG DEPTH: 5-1/4"



Adjustable filler panels included.
Leg Panels: 37-3/8"x9-3/4" Header Panel: 55-1/4"x13-7/8"



5964-G Peachtree Corners East, Norcross, GA 30071
PH 770-987-3827 www.americastarchstone.com